

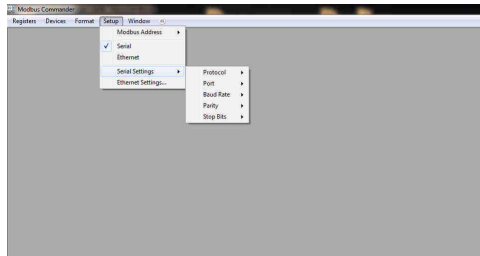
WattsOn MKII Firmware Update Procedure

Requirements:

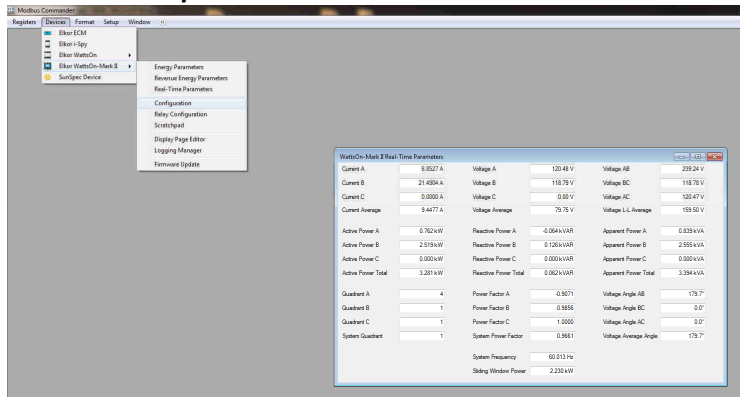
- A Windows PC with the ELKOR Modbus Commander installed.
- A Reliable means to communicate with the meter on either Modbus RTU(RS-485) or Modbus TCP(Ethernet).
- WattsOn MKII firmware file(with extension ".frm")

Procedure:

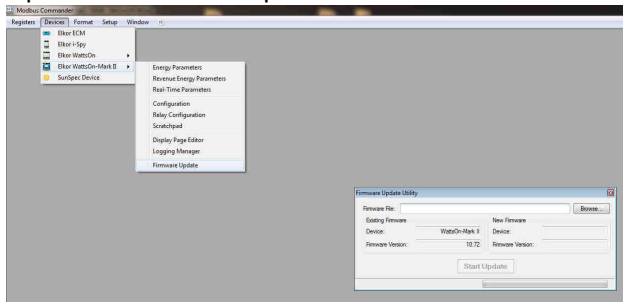
1. Connect the meter to the appropriate (dependent on meter options) communication network (RS-485 or Ethernet).
2. Open Modbus Commander and configure the communication to the meter and connect to it.



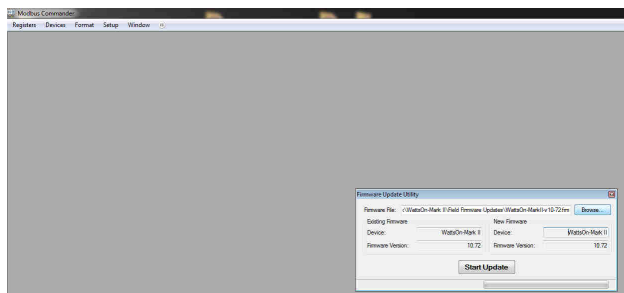
3. Verify communication is working by opening one of the meter register views such as "Configuration" or "Real Time Parameters" and see that it displays data without errors.
After meter communication has been confirmed close all register views before moving to the next step.



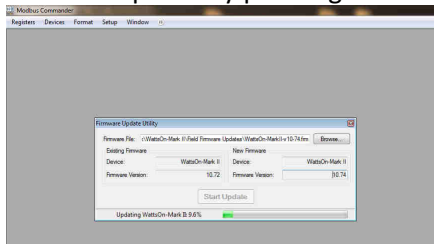
4. Open the Firmware Updater and see that it detects the meter as shown



5. In the Firmware Updater browse to the meter firmware file with the file extension ".frm".



6. Start the update by pressing the "Start Update" button and monitor the progress bar.



7. The upgrade is complete when the progress bar is 100% and status is "Update Complete"

