

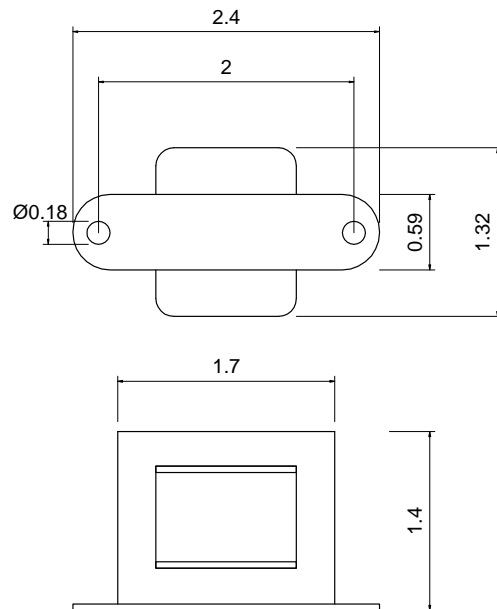
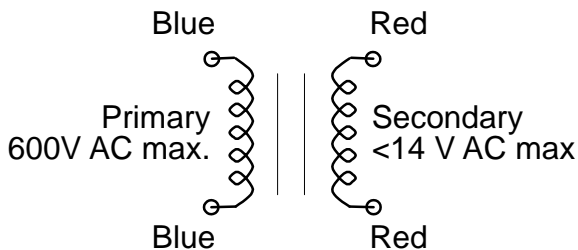
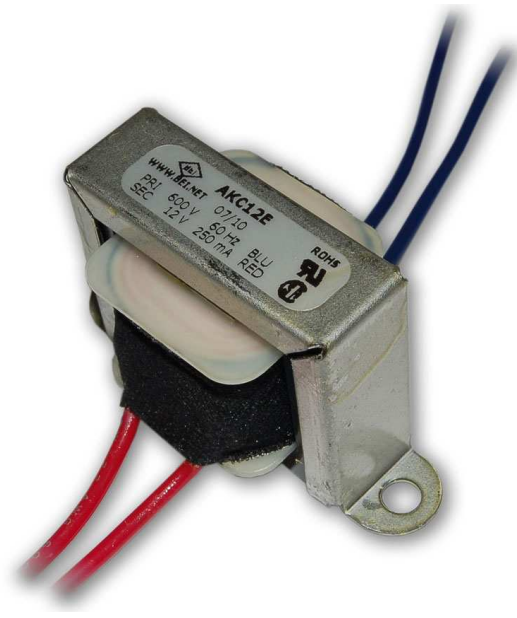
CHANNEL MOUNT VOLTAGE TRANSFORMER

FEATURES:

- ◆ Flying leads
- ◆ Small Size, Channel Frame Mounting
- ◆ Dielectric tested to UL/CSA standards for 600V class devices
- ◆ CSA certified, UL Recognized

APPLICATIONS:

- ◆ Line voltage interface for Elkor voltage transducers (i-Snail-VT) and ETV3.xxx
- ◆ Power supply transformer for small loads



Dimensions in INCHES

<u>P/N</u>	<u>Input (max)</u>	<u>Output (nominal)</u>	<u>Leads</u>
VT600	600V 50-60Hz	12V @ 0.250A (3VA)	8", AWG 22, 600V
Primary can withstand up to 10% over voltage.			

ORDERING INFORMATION:

VT600 - Fully describes this product